

# Online Safety and Acceptable Use of Technology Policy

March 2020

## Contents

### Online Safety Policy Contents:

1. Policy Aims
2. Policy Scope
3. Monitoring and Review
4. Roles and Responsibilities
5. Education and Engagement Approaches
6. Reducing Online Risks
7. Safer Use of Technology
8. Social Media
9. Mobile Technology: Use of Personal Devices and Mobile Phones
10. Responding to Online Safety Incidents and Concerns
11. Procedures for Responding to Specific Online Incidents or Concerns

### Appendices

- Responding to an Online Safety Concern Flowchart
- Useful Links for Educational Settings

### Acceptable Use of Technology Policy (AUPs) Template Content

- Acceptable Use of Technology Policy (AUP)
  - Using the AUP Templates: Guidance Notes

#### Learner Acceptable Use of Technology

- Early Years and Key Stage 1 (0-6)
- Key Stage 2 (7-11)

#### Acceptable Use of Technology Forms for Parents/Carers

- Parent/Carer Acknowledgement Form

#### Acceptable Use of Technology for Staff, Visitors and Volunteers

- Staff Acceptable Use of Technology Policy

# St Mary & St Benedict Catholic Primary School Online Safety Policy **DRAFT**



## Key Details

Designated Safeguarding Lead (s): (Pauline MacDonald, Head teacher)

Named Governor with lead responsibility: (Name)

Date written: (November 2019)

Date agreed and ratified by Governing Body: ( Spring 2020)

Date of next review: (December 2021)

This policy will be reviewed annually. It will also be revised following any concerns and/or updates to national and local guidance or procedures.

# St Mary & St Benedict CP School Online Safety Policy

## 1. Policy aims

- This online safety policy has been written by St Mary & St Benedict CP School, involving staff, learners and parents/carers, building on the Kent County Council/The Education People online safety policy template, with specialist advice and input as required.
- It takes into account the DfE statutory guidance '[Keeping Children Safe in Education](#)' 2019, [Early Years and Foundation Stage](#) 2017 '[Working Together to Safeguard Children](#)' 2018. It also references documentation from Childnet.
- The purpose of St Mary & St Benedict CP School online safety policy is to
  - safeguard and promote the welfare of all members of St Mary & St Benedict CP School community online.
  - identify approaches to educate and raise awareness of online safety throughout our community.
  - enable all staff to work safely and responsibly, to role model positive behaviour online and to manage professional standards and practice when using technology.
  - identify clear procedures to follow when responding to online safety concerns.
- St Mary & St Benedict CP School identifies that the issues classified within online safety are considerable but can be broadly categorised into three areas of risk.
  - **Content:** being exposed to illegal, inappropriate or harmful material
  - **Contact:** being subjected to harmful online interaction with other users
  - **Conduct:** personal online behaviour that increases the likelihood of, or causes, harm.

## 2. Policy scope

- St Mary & St Benedict CP School recognises that online safety is an essential part of safeguarding and acknowledges its duty to ensure that all learners and staff are protected from potential harm online.
- St Mary & St Benedict CP School identifies that the internet and associated devices, such as computers, tablets, mobile phones and games consoles are an important part of everyday life which present positive and exciting opportunities, as well as challenges and risks.
- St Mary & St Benedict CP School will empower our learners to acquire the knowledge needed to use the internet and technology in a safe, considered and respectful way, and develop their resilience so they can manage and respond to online risks.

- This policy applies to all staff, including the governing body, leadership team, teachers, support staff, external contractors, visitors, volunteers and other individuals who work for, or provide services on behalf of the setting (collectively referred to as “staff” in this policy) as well as learners and parents and carers.
- This policy applies to all access to the internet and use of technology, including mobile technology, or where learners, staff or other individuals have been provided with setting issued devices for use, both on and off-site.

## 2.2 Links with other policies and practices

- This policy links with several other policies, practices and action plans, including but not limited to:
  - Anti-bullying policy
  - Acceptable Use Policies (AUP) and/or the Code of conduct/staff behaviour policy
  - Behaviour and discipline policy
  - Child protection policy
  - Confidentiality policy
  - Curriculum policies, such as: Computing, Personal Social and Health Education (PSHE), Citizenship and Relationships and Sex Education (RSE)
  - Data security (GDPR)
  - Cameras and image use policy
  - Searching, screening and confiscation policy

## 3. Monitoring and review

- Technology evolves and changes rapidly; as such St Mary & St Benedict CP School will review this policy annually. The policy will be revised following any national or local policy updates, any local child protection concerns and/or any changes to our technical infrastructure.
- We will regularly monitor internet use and evaluate online safety mechanisms to ensure that this policy is consistently applied.
- To ensure they have oversight of online safety, the Head teacher /Computing Lead/Technician will be informed of online safety concerns, as appropriate.
- The named governor for safeguarding will report on online safety practice and incidents, including outcomes, on a regular basis to the wider governing body.
- Any issues identified via monitoring policy compliance will be incorporated into our action planning.

- **Roles and Responsibilities**

- The Designated Safeguarding Lead (DSL) (*Pauline MacDonald, Head-teacher*) is recognised as holding overall lead responsibility for online safety.
- St Mary & St Benedict CP School recognises that all members of the community have important roles and responsibilities to play with regards to online safety.

#### 4.1 The leadership and management team will:

- Create a whole setting culture that incorporates online safety throughout all elements of school life.
- Ensure that online safety is viewed as a safeguarding issue and that practice is in line with national and local recommendations and requirements.
- Implement appropriate and up-to-date policies regarding online safety which addresses the acceptable use of technology, peer on peer abuse, use of social media and mobile technology.
- Work with technical staff to ensure that suitable and appropriate filtering and monitoring systems are in place.
- Support the DSL and any deputies by ensuring they have enough time and resources to carry out their responsibilities.
- Ensure robust reporting channels are in place for the whole community to access regarding online safety concerns.
- Undertake appropriate risk assessments regarding the safe use of technology on site.
- Audit and evaluate online safety practice to identify strengths and areas for improvement.
- Ensure that staff, learners and parents/carers are proactively engaged in activities which promote online safety.
- Support staff to ensure that online safety is embedded within a progressive whole setting curriculum which enables all learners to develop an appropriate understanding of online safety.

#### 4.2 The Designated Safeguarding Lead (DSL) will:

- Act as a named point of contact within the setting on all online safeguarding issues.
- Liaise with other members of staff, such as support staff, technicians, network managers and the SENCO on matters of online safety.
- Ensure appropriate referrals are made to relevant external partner agencies, as appropriate.
- Work alongside deputy to ensure online safety is recognised as part of the settings safeguarding responsibilities, and that a coordinated whole school approach is implemented.

- Access regular, appropriate training and support to ensure they understand the unique risks associated with online safety and have the relevant up-to-date knowledge required to keep learners safe online.
- Access regular and appropriate training and support to ensure they recognise the additional risks that learners with SEN and disabilities (SEND) face online.
- Ensure all members of staff receive regular, up-to-date and appropriate online safety training and information as part of their induction and child protection training.
- Keep up-to-date with current research, legislation and trends regarding online safety and communicate this with the community, as appropriate.
- Work with staff to coordinate participation in local and national events to promote positive online behaviour, such as Safer Internet Day.
- Ensure that online safety is promoted to parents, carers and the wider community through a variety of channels and approaches.
- Maintain records of online safety concerns, as well as actions taken, as part of the settings safeguarding recording mechanisms.
- Monitor online safety incidents to identify gaps and trends and use this data to update the education response and school policies and procedures.
- Report online safety concerns, as appropriate, to school management.
- Work with the leadership team to review and update online safety policies on a regular basis (at least annually) with stakeholder input.
- Meet regularly with the governor with a lead responsibility for safeguarding.

#### **4.3 It is the responsibility of all members of staff to:**

- Contribute to the development of our online safety policies.
- Read and adhere to our online safety policy and acceptable use of technology policies.
- Take responsibility for the security of IT systems and the electronic data they use or have access to.
- Model good practice when using technology with learners
- Maintain a professional level of conduct in their personal use of technology, both on and off site.
- Embed online safety education in curriculum delivery wherever possible.
- Have an awareness of a range of online safety issues and how they may be experienced by the learners in their care.
- Identify online safety concerns & take appropriate action by following the school safeguarding policies and procedures.
- Know when and how to escalate online safety issues, including reporting to the DSL and signposting learners and parents/carers to appropriate support, internally and externally.
- Take personal responsibility for professional development in this area.

#### 4.4 It is the responsibility of staff managing the technical environment to:

- Provide technical support and perspective to the DSL and school leadership team, especially in the development and implementation of appropriate online safety policies and procedures.
- Implement appropriate security measures as directed by the leadership team to ensure that the settings IT infrastructure is secure and not open to misuse or malicious attack, whilst allowing learning opportunities to be maximised.
- Ensure that our filtering policy and monitoring systems and approaches are applied and updated on a regular basis; responsibility for its implementation is shared with the leadership team.
- Ensure appropriate technical support and access to our filtering and monitoring systems is given to the DSL and/or deputies to enable them to take appropriate safeguarding action when required.

#### 4.5 It is the responsibility of learners (at a level that is appropriate to their individual age and ability) to:

- Engage in age/ability appropriate online safety education.
- Read and adhere to the acceptable use of technology and behaviour policies.
- Respect the feelings and rights of others, on and offline.
- Take an appropriate level of responsibility for keeping themselves and others safe online.
- Seek help from a trusted adult, if they are concerned about anything, they or others experience online.

#### 4.6 It is the responsibility of parents and carers to:

- Read our acceptable use of technology policies and encourage their children to adhere to them.
- Support our online safety approaches by discussing online safety issues with their children and reinforcing appropriate and safe online behaviours at home.
- Role model safe and appropriate use of technology and social media and abide by the home-school agreement referring to the acceptable use of technology policies.
- Seek help and support from the school or other appropriate agencies, if they or their child encounter online issues.
- Contribute to the development of our online safety policies.
- Use our systems, such as learning platforms and other IT resources, safely and appropriately.
- Take responsibility for their own awareness in relation to the risks and opportunities posed by the new and emerging technologies that their children access and use at home.

## 5. Education and engagement approaches

### 5.1 Education and engagement with learners

- The setting will establish and embed a whole school culture and will raise awareness and promote safe and responsible internet use amongst learners by:
  - ensuring our curriculum and whole school approach is developed in line with the UK Council for Internet Safety (UKCIS) '[Education for a Connected World Framework](#)' and DfE '[Teaching online safety in school](#)' guidance.
  - ensuring online safety is addressed in Relationships Education, Relationships and Sex Education, Health Education, Citizenship and Computing programmes of study.
  - reinforcing online safety principles in other curriculum subjects as appropriate, and whenever technology or the internet is used on site.
  - creating a safe environment in which all learners feel comfortable to say what they feel, without fear of getting into trouble and/or being judged for talking about something which happened to them online.
  - involving the DSL (or a deputy) as part of planning for online safety lessons or activities, so they can advise on any known safeguarding cases, and ensure support is in place for any learners who may be impacted by the content.
  - making informed decisions to ensure that any educational resources used are appropriate for our learners.
  - using external visitors, where appropriate, to complement and support our internal online safety education approaches.
  - providing online safety education as part of the transition programme across the key stages and/or when moving between establishments.
- St Mary & St Benedict CP School will support learners to understand and follow our acceptable use policies in a way which suits their age and ability by:
  - displaying acceptable use posters in all rooms with internet access.
  - informing learners that network and internet use will be monitored for safety and security purposes, and in accordance with legislation.
  - seeking learner voice when writing and developing online safety policies and practices, including curriculum development and implementation.
- St Mary & St Benedict CP School will ensure learners develop the underpinning knowledge and behaviours needed to navigate the online world safely, in a way which suits their age and ability by:
  - ensuring age appropriate education regarding safe and responsible use precedes internet access.

- teaching learners to evaluate what they see online and recognise techniques used for persuasion, so they can make effective judgements about if what they see is true, valid or acceptable.
- educating them in the effective use of the internet to research, including the skills of knowledge location, retrieval and evaluation.
- enabling them to understand what acceptable and unacceptable online behaviour looks like.
- preparing them to identify possible online risks and make informed decisions about how to act and respond.
- ensuring they know how and when to seek support if they are concerned or upset by something they see or experience online.

## 5.2 Vulnerable Learners

- St Mary & St Benedict CP School recognises that any learner can be vulnerable online, and vulnerability can fluctuate depending on their age, developmental stage and personal circumstances. However, there are some learners, for example looked after children and those with special educational needs, who may be more susceptible or may have less support in staying safe online.
- St Mary & St Benedict CP School will ensure that differentiated and appropriate online safety education, access and support is provided to vulnerable learners. The school also ensures that support can be provided as follows – but not limited to: appropriate website links, individual logins, supervision and specialised software.
- Staff at St Mary & St Benedict CP School will seek input from specialist staff as appropriate, including the DSL, SENCO etc. ... to ensure that the policy and curriculum is appropriate to our community's needs.

## 5.3 Training and engagement with staff

- We will
  - provide and discuss the online safety policy and procedures with all members of staff as part of induction.
  - provide up-to-date and appropriate online safety training for all staff which is integrated, aligned and considered as part of our overarching safeguarding approach.
  - Staff training covers the potential risks posed to learners (**content, contact and conduct**) as well as our professional practice expectations.

- build on existing expertise by providing opportunities for staff to contribute to and shape our online safety approaches, including curriculum, policies and procedures.
- make staff aware that our IT systems are monitored, and that activity can be traced to individual users. Staff will be reminded to behave professionally and in accordance with our policies when accessing our systems and devices.
- make staff aware that their online conduct, including personal use of social media, can have an impact on their professional role and reputation.
- highlight useful educational resources and tools which staff could use with learners.
- ensure all members of staff are aware of the procedures to follow regarding online safety concerns involving learners, colleagues or other members of the community.

#### 5.4 Awareness and engagement with parents and carers

- St Mary & St Benedict CP School recognises that parents and carers have an essential role to play in enabling children and young people to become safe and responsible users of the internet and associated technologies.
- We will build a partnership approach to online safety with parents and carers by:
  - providing information and guidance on online safety in a variety of formats. St Mary & St Benedict CP School provides monthly guidance to parents in regards to 'Online Safety'.
  - drawing their attention to our online safety policy and expectations in our newsletters and other external communication (such as letters and social media channels) as well as in our prospectus and on our website.
  - requesting parents and carers read online safety information as part of joining our community, for example, within our home school agreement.
  - requiring them to read our acceptable use policies and discuss the implications with their children.

### 6. Reducing Online Risks

- St Mary & St Benedict CP School recognises that the internet is a constantly changing environment with new apps, devices, websites and material emerging at a rapid pace.
- We will:
  - regularly review the methods used to identify, assess and minimise online risks.
  - examine emerging technologies for educational benefit and undertake appropriate risk assessments before their use in the school is permitted.

- ensure that appropriate filtering and monitoring is in place and take all reasonable precautions to ensure that access is appropriate.
- recognise that due to the global and connected nature of the internet, it is not possible to guarantee that unsuitable material cannot be accessed via our systems or devices and as such identify clear procedures to follow if breaches or concerns arise.
- All members of the community are made aware of our expectations regarding safe and appropriate behaviour online and the importance of not posting any content, comments, images or videos which could cause harm, distress or offence. This is clearly outlined in our acceptable use of technology policies and highlighted through a variety of education and training approaches.

## 7. Safer Use of Technology

### 7.1 Classroom use

- St Mary & St Benedict CP School uses a wide range of technology. This includes access to:
  - Computers, laptops, tablets and other digital devices
  - Internet, which may include search engines and educational websites
  - Learning platform/intranet
  - Email
  - Games consoles and other games-based technologies
  - Digital cameras, web cams and video cameras
- All setting owned devices will be used in accordance with our acceptable use of technology policies and with appropriate safety and security measures in place.
- Members of staff will always evaluate websites, tools and apps fully before use in the classroom or recommending for use at home.
- The setting will use appropriate search tools as identified following an informed risk assessment. Teachers should provide a list of suitable weblinks for the children or consider the use of [SWGfL Squiggle](#) as a search engine.
  - If school allows learners to use search tools such as Google or Bing, they should clearly identify - in planning - what precautions have been taken to reduce risks and how learners and staff are expected to respond to inappropriate search results.
- We will ensure that the use of internet-derived materials, by staff and learners complies with copyright law and acknowledge the source of information.
- Supervision of internet access and technology use will be appropriate to learners age and ability.
  - Early Years Foundation Stage and Key Stage 1

- Access to the internet will be by adult demonstration, with occasional directly supervised access to specific and approved online materials, which supports the learning outcomes planned for the learners age and ability.
- Key Stage 2
  - Learners will use age-appropriate search engines and online tools.
  - Learners will be directed by the teacher to online materials and resources which support the learning outcomes planned for the learners age and ability.

## 7.2 Managing internet access

- We will maintain a written record of users who are granted access to our devices and systems.
- All staff, learners and visitors will read and agree an acceptable use policy before being given access to our computer system, IT resources or the internet.

## 7.3 Filtering and monitoring

### 7.3.1 Decision making

- St Mary & St Benedict CP School governors and leaders have ensured that our school has age and ability appropriate filtering and monitoring in place to limit learner's exposure to online risks.
- Our decision regarding filtering and monitoring has been informed by a risk assessment, considering our specific needs and circumstances.
- Changes to the filtering and monitoring approach will be risk assessed by staff with educational and technical experience and, where appropriate, with consent from the leadership team; all changes to the filtering policy are logged and recorded.
- The leadership team in liaison with the technician will ensure that regular checks are made to ensure that the filtering and monitoring methods are effective and appropriate.
- The governors and leaders are mindful to ensure that "over blocking" does not unreasonably restrict access to educational activities and safeguarding materials.
- All members of staff are aware that they cannot rely on filtering and monitoring alone to safeguard learners; effective classroom management and regular education about safe and responsible use is essential.

### 7.3.2 Appropriate filtering

- St Mary & St Benedict CP School's education broadband connectivity is provided through:
  - Coventry City Council / JISC/JANet (Joint Academic Network)
- St Mary & St Benedict CP School uses Smoothwall (located in Coventry City Council data centres and managed by CCC)

- Smoothwall blocks access to sites which could promote or include harmful and/or inappropriate behaviour or material. This includes content which promotes discrimination or extremism, drugs/substance misuse, malware/hacking, gambling, piracy and copyright theft, pro-self-harm, eating disorder and/or suicide content, pornographic content and violent material.
- Smoothwall, JISC and Impero are all members of [Internet Watch Foundation](#) (IWF) and blocks access to illegal Child Abuse Images and Content (CAIC).
- Smoothwall integrates the 'the police assessed list of unlawful terrorist content, produced on behalf of the Home Office'
- We work with Impero Education Pro to ensure that our filtering policy is continually reviewed to reflect our needs and requirements.
- If learners or staff discover unsuitable sites or material, they are required to: *turn off monitor/screen, report the concern immediately to a member of staff, report the URL of the site to technical staff who will then notify appropriate body to prevent a reoccurrence.*
- Filtering breaches will be reported to the DSL and technical staff and will be recorded and escalated as appropriate.
- Parents/carers will be informed of filtering breaches involving learners.
- Any access to material believed to be illegal will be reported immediately to the appropriate agencies, such as the IWF, the police and/or CEOP. The school technician can whitelist and blacklist websites with Smoothwall, run by CCC.

### 7.3.3 Appropriate monitoring

- We will appropriately monitor internet use on all setting owned or provided internet enabled devices.
- All users will be informed that use of our systems can be monitored and that all monitoring will be in line with data protection, human rights and privacy legislation.

## 7.4 Managing personal data online

- Personal data will be recorded, processed, transferred and made available online in accordance with General Data Protection Regulations and Data Protection legislation.
  - Full information can be found in our information security policy which can be accessed on the school website - <https://www.stmary-stben.coventry.sch.uk/policies/>

## 7.5 Security and management of information systems

We take appropriate steps to ensure the security of our information systems, including:

- Virus protection being updated regularly.

- Encryption for personal data sent over the Internet or taken off site (such as via portable media storage) or access via appropriate secure remote access systems.
- Not using portable media without specific permission; portable media will be checked by an anti-virus /malware scan before use.
- Not downloading unapproved software to work devices or opening unfamiliar email attachments.
- Preventing, as far as possible, access to websites or tools which could compromise our systems, including anonymous browsing and other filtering bypass tools.
- Checking files held on our network, as required and when deemed necessary by leadership staff.
- The appropriate use of user logins and passwords to access our network.
  - Specific user logins and passwords will be enforced for all users.
- All users are expected to log off or lock their screens/devices if systems are unattended.

### 7.5.1 Password policy

All members of staff have their own unique username and private passwords to access our systems; members of staff are responsible for keeping their password private.

- From year 3, all learners are provided with their own unique username and private passwords to access our systems; learners are responsible for keeping their password private.
- We require all users to
  - use strong passwords for access into our system.
  - change their passwords at least annually
  - not share passwords or login information with others or leave passwords/login details where others can find them.
  - not to login as another user at any time.
  - lock access to devices/systems when not in use.

### 7.6 Managing the safety of our website

- We will ensure that information posted on our website meets the requirements as identified by the DfE.
- We will ensure that our website complies with guidelines for publications including accessibility, data protection, respect for intellectual property rights, privacy policies and copyright.
- Staff or learner's personal information will not be published on our website; the contact details on the website will be our setting address, email and telephone number.
- The administrator account for our website will be secured with an appropriately strong password.

- We will post appropriate information about safeguarding, including online safety, on our website for members of the community.

## 7.7 Publishing images and videos online

- We will ensure that all images and videos shared online are used in accordance with the associated policies, including (but not limited to) the cameras and image use, data security, acceptable use policies, codes of conduct/behaviour, social media and use of personal devices and mobile phones policies.

## 7.8 Managing email

- Access to our email systems will always take place in accordance with data protection legislation and in line with other policies, including confidentiality, acceptable use of technology policies and the code of conduct/behaviour policy.
- The forwarding of any chain messages/emails is not permitted.
- Spam or junk mail will be blocked and reported to the email provider.
- Any electronic communication which contains sensitive or personal information will only be sent using secure and encrypted email.
- Setting email addresses and other official contact details will not be used to set up personal social media accounts.
- Members of the community will immediately tell the *Computing Technician* if they receive offensive communication, and this will be recorded in our safeguarding files/records.
- Excessive social email use can interfere with teaching and learning and will be restricted; access to external personal email accounts may be blocked on site.

### 7.8.1 Staff email

- All members of staff are provided with an email address to use for all official communication; the use of personal email addresses by staff for any official business is not permitted.
- Members of staff are encouraged to have an appropriate work life balance when responding to email, especially if communication is taking place between staff, learners and parents.

### 7.8.2 Learner email

- Learners will use a provided email account for educational purposes.
- Learners will agree an acceptable use policy and will receive education regarding safe and appropriate email etiquette before access is permitted.
- Whole-class or group email addresses will be used for communication outside of the setting.

## 7.10 Management of learning platforms

- St Mary & St Benedict CP School uses **DB Primary** as its official learning platform.
- Leaders, the school technician and staff will regularly monitor the usage of the Learning Platform (LP), including message/communication tools and publishing facilities.
- Only current members of staff, learners and parents will have access to the LP.
- When staff and learners leave the setting, their account will be disabled.
- Learners and staff will be advised about acceptable conduct and use when using the LP.
- All users will be mindful of copyright and will only upload appropriate content onto the LP.
- Any concerns about content on the LP will be recorded and dealt with in the following ways:
  - The user will be asked to remove material deemed to be inappropriate or offensive.
  - If the user does not comply, the material will be removed by the site administrator.
  - Access to the LP for the user may be suspended.
  - The user will discuss the issues with a member of leadership before reinstatement.
  - A learner's parents/carers may be informed.
  - If the content is illegal, we will respond in line with existing child protection procedures.
- Learners may require editorial approval from a member of staff. This may be given to the learner to fulfil a specific aim and may have a limited time frame.

## 7.11 Management of applications (apps) used to record children's progress

- We use Tapestry - EYFS and OTrack N-Y6 to track learners progress and share appropriate information within school.
- The Head-teacher and Assessment Coordinator will ensure that the use of tracking systems is appropriately risk assessed prior to use, and that use takes place in accordance with data protection legislation, including the General Data Protection Regulations (GDPR) and Data Protection legislation.
- To safeguard learner's data
  - only learner issued devices will be used for apps that record and store learners' personal details, attainment or photographs.
  - personal staff mobile phones or devices will not be used to access or upload content to any apps which record and store learners' personal details, attainment or images.
  - devices will be appropriately encrypted if taken off site, to reduce the risk of a data security breach, in the event of loss or theft.
  - all users will be advised regarding safety measures, such as using strong passwords and logging out of systems.

- parents and carers will be informed of the expectations regarding safe and appropriate use, prior to being given access; for example, not sharing passwords or images.

## 8. Social Media

### 8.1 Expectations

- The expectations' regarding safe and responsible use of social media applies to all members of St Mary & St Benedict CP School community.
- The term social media may include (but is not limited to) blogs, wikis, social networking sites, forums, bulletin boards, online gaming, apps, video/photo sharing sites, chat-rooms and instant messenger apps.
- All members of St Mary & St Benedict CP School community are expected to engage in social media in a positive and responsible manner.
  - All members of St Mary & St Benedict CP School community are advised not to post or share content that may be considered threatening, hurtful or defamatory to others, the school or school community on any social media service.
- We will control learner and staff access to social media whilst using provided devices and systems on site.
  - The use of social media during school hours for personal use is not appropriate for staff.
  - The use of social media during school hours for school use is permitted for staff.
- Concerns regarding the online conduct of any member of St Mary & St Benedict CP School community on social media, will be reported to the DSL and be managed in accordance with our anti-bullying, allegations against staff, behaviour and child protection policies as well as the school Code of Conduct.

### 8.2 Staff personal use of social media

- The safe and responsible use of social media sites will be discussed with all members of staff as part of staff induction and will be revisited and communicated via regular staff training opportunities.
- Safe and professional behaviour will be outlined for all members of staff, including volunteers, as part of our code of conduct/behaviour policy and/or acceptable use of technology policy.

#### 8.2.1 Reputation

- All members of staff are advised that their online conduct on social media can have an impact on their role and reputation within the school.
  - Civil, legal or disciplinary action may be taken if staff are found to bring the profession or institution into disrepute, or if something is felt to have undermined confidence in their professional abilities.

- All members of staff are advised to safeguard themselves and their privacy when using social media services. Advice will be provided to staff via staff training and by sharing appropriate guidance and resources on a regular basis. This will include, but is not limited to:
  - Setting appropriate privacy levels on their personal accounts/sites.
  - Being aware of the implications of using location sharing services.
  - Opting out of public listings on social networking sites.
  - Logging out of accounts after use.
  - Using strong passwords.
  - Ensuring staff do not represent their personal views as being that of the setting.
- Members of staff are encouraged not to identify themselves as employees of St Mary & St Benedict CP School on their personal social networking accounts; this is to prevent information being linked with the setting and to safeguard the privacy of staff members.
- All members of staff are encouraged to carefully consider the information, including text and images, they share and post online. Staff are expected to ensure that their social media use is compatible with their professional role and is in accordance our policies, and the wider professional and legal framework.
- Information and content that staff members have access to as part of their employment, including photos and personal information about learners and their family members or colleagues, will not be shared or discussed on social media sites.
- Members of staff will notify the leadership team immediately if they consider that any content shared on social media sites conflicts with their role.

### 8.2.2 Communicating with learners and parents/carers

- Staff will not use personal social media accounts to contact learners or parents/carers, nor should any contact be accepted.
- All members of staff are advised not to communicate with or add any current or past learners or their family members, as 'friends' on any personal social media sites, applications or profiles.
- Any pre-existing relationships or exceptions which compromise this requirement will be discussed with the DSL and the Head-teacher.
  - Decisions made and advice provided in these situations will be formally recorded in order to safeguard learners, the setting and members of staff.
- If ongoing contact with learners is required once they have left the setting, members of staff will be expected to use existing alumni networks, or use official setting provided communication tools.
- Any communication from learners and parents received on personal social media accounts will be reported to the DSL or Head-teacher.

## 8.3 Learners use of social media

- Safe and appropriate use of social media will be taught to learners as part of an embedded and progressive education approach via age appropriate sites and resources.
- We are aware that many popular social media sites are not permitted for use by children under the age of 13, or in some cases higher. As such, we will not create accounts for learners under the required age as outlined in the services terms and conditions.
- Any concerns regarding learners use of social media will be dealt with in accordance with existing policies, including anti-bullying and behaviour.
- Concerns regarding learners use of social media will be shared with parents/carers as appropriate, particularly when concerning underage use of social media services and games.
- Learners will be advised:
  - to consider the benefits and risks of sharing personal details or information on social media sites which could identify them and/or their location.
  - to only approve and invite known friends on social media sites and to deny access to others by making profiles private.
  - not to meet any online friends without a parent/carer or other appropriate adults' permission, and to only do so when a trusted adult is present.
  - to use safe passwords.
  - to use social media sites which are appropriate for their age and abilities.
  - how to block and report unwanted communications.
  - how to report concerns on social media, both within the setting and externally.

## 8.4 Official use of social media

- St Mary & St Benedict CP School official social media channels are:
  - [Twitter link](#); [School Website](#)
- The official use of social media sites by St Mary & St Benedict CP School only takes place with clear educational or community engagement objectives and with specific intended outcomes.
  - The official use of social media as a communication tool has been formally risk assessed and approved by the Head-teacher
  - Leadership staff have access to account information and login details for our social media channels, in case of emergency, such as staff absence.
  - Official social media sites are suitably protected and, where possible, run and are linked to our website.
- Official social media use will be conducted in line with existing policies, including but not limited to anti-bullying, image/camera use, data protection, confidentiality and child protection.
- All communication on official social media platforms by staff on behalf of the setting will be clear, transparent and open to scrutiny.

- Parents/carers and learners will be informed of any official social media use, along with expectations for safe use and action taken to safeguard the community.
  - Only social media tools, eg: Twitter, which have been risk assessed and approved as suitable for educational purposes will be used.
- Any official social media activity involving learners will be reviewed when possible.
- Parents and carers will be informed of any official social media use with learners; written parental consent will be obtained, as required.
- We will ensure that any official social media use does not exclude members of the community who are unable or unwilling to use social media channels.

#### 8.4.1 Staff expectations

- Members of staff who follow and/or like our official social media channels will be advised to use dedicated professional accounts where possible, to avoid blurring professional boundaries.
- If members of staff are participating in online social media activity as part of their capacity as an employee of the setting, they will:
  - Be aware they are an ambassador for the setting.
  - Be professional, responsible, credible, fair and honest, and consider how the information being published could be perceived or shared.
  - Always act within the legal frameworks they would adhere to within the workplace, including libel, defamation, confidentiality, copyright, data protection and equalities laws.
  - Ensure appropriate consent has been given before sharing images on the official social media channel.
  - Not disclose information, make commitments or engage in activities on behalf of the setting, unless they are authorised to do so.
  - Not engage with any private/direct messaging with current or past learners or parents/carers.
  - Inform their line manager, the DSL and Head-teacher of any concerns, such as criticism, inappropriate content or contact from learners.

## 9. Mobile Technology: Use of Personal Devices and Mobile Phones

- St Mary & St Benedict CP School recognises that personal communication through mobile technologies is part of everyday life for many learners, staff and parents/carers. Mobile technology needs to be used safely and appropriately within the setting.

### 9.1 Expectations

- All use of mobile technology including mobile phones and personal devices such as tablets, games consoles and wearable technology will take place in accordance with our policies, such as anti-bullying, behaviour and child protection and with the law.
- Electronic devices of any kind that are brought onto site are the responsibility of the user.
  - All members of St Mary & St Benedict CP School community are advised to take steps to protect their mobile phones or personal devices from loss, theft or damage; we accept no responsibility for the loss, theft or damage of such items on our premises.
  - All members of St Mary & St Benedict CP School community are advised to use passwords/pin numbers to ensure that unauthorised calls or actions cannot be made on their phones or devices; passwords and pin numbers should be kept confidential and mobile phones and personal devices should not be shared.
- Mobile phones and personal devices are not permitted to be used in specific areas within the site such as classrooms, changing areas, toilets etc. ...
- The sending of abusive or inappropriate messages or content via mobile phones or personal devices is forbidden by any member of the community; any breaches will be dealt with in line with our anti-bullying and behaviour policies.
- All members of St Mary & St Benedict CP School community are advised to ensure that their mobile phones and personal devices do not contain any content which may be offensive, derogatory or would otherwise contravene our behaviour or child protection policies.

## 9.2 Staff use of personal devices and mobile phones

- Members of staff will ensure that use of personal phones and devices takes place in accordance with the law, as well as, relevant policy and procedures, such as confidentiality, child protection, data security and acceptable use of technology.
- Staff will be advised to:
  - keep mobile phones and personal devices in a safe and secure place during lesson time.
  - keep mobile phones and personal devices switched off or switched to 'silent' mode during lesson times.
  - ensure that Bluetooth or other forms of communication, such as 'airdrop', are hidden or disabled during lesson times.
  - not use personal devices during teaching periods, unless permission has been given by the head teacher such as in emergency circumstances.
  - ensure that any content brought onto site via mobile phones and personal devices are compatible with their professional role and expectations.

- Members of staff are not permitted to use their own personal phones or devices for contacting learners or parents and carers, except in extenuating circumstances, eg: in jury on school residential or after school office opening hours
- Staff will not use personal devices or mobile phones:
  - to take photos or videos of learners and will only use work-provided equipment for this purpose.
  - directly with learners and will only use work-provided equipment during lessons/educational activities.
- If a member of staff breaches our policy, action will be taken in line with our staff behaviour and allegations policy.
- If a member of staff is thought to have illegal content saved or stored on a mobile phone or personal device, or have committed a criminal offence using a personal device or mobile phone, the police will be contacted and the LADO (Local Authority Designated Officer) will be informed in line with our allegations policy.

### 9.3 Learners use of personal devices and mobile phones

- Learners will be educated regarding the safe and appropriate use of personal devices and mobile phones and will be made aware of boundaries and consequences.
- If a learner needs to a mobile phone to contact his/her parents or carers when travelling to and from school, they will be allowed to bring a phone to school. This must be kept in the school office during the school day.

### 9.4 Visitors' use of personal devices and mobile phones

- Parents/carers and visitors, including volunteers and contractors, should ensure that mobile phones and personal devices are turned to silent when inside the school building.
- Appropriate signage and information is provided to inform parents/carers and visitors of expectations of use.
- Visitors, including volunteers and contractors, who are on site for regular or extended periods of time are expected to use their mobile phones and personal devices in accordance with our acceptable use of technology policy and other associated policies, including but not limited to anti-bullying, behaviour, child protection and image use. They must be informed of this by the school office staff on arrival.
- Members of staff are expected to challenge visitors if they have concerns and inform the DSL and Head-teacher of any breaches of our policy.

## 10. Responding to Online Safety Incidents

- All members of the community will be made aware of the reporting procedure for online safety concerns, including breaches of filtering, peer on peer abuse, including cyberbullying and youth produced sexual imagery (sexting), online sexual violence and harassment, online abuse and exploitation and illegal content.
- All members of the community will respect confidentiality and the need to follow the official procedures for reporting concerns.
  - Learners, parents and staff will be informed of our complaints procedure. Staff will be made aware of the whistleblowing procedure.
- We require staff, parents, carers and learners to work in partnership with us to resolve online safety issues.
- After any investigations are completed, leadership staff will debrief, identify lessons learnt and implement any policy or curriculum changes, as required.
- If we are unsure how to proceed with an incident or concern, the DSL will seek advice from the Education Safeguarding Service.
- Where there is a concern that illegal activity has taken place, we will contact the police using IOI, or 999 if there is immediate danger or risk of harm as appropriate.
- If information relating to a specific incident or a concern needs to be shared beyond our community, for example if other local settings are involved or the wider public may be at risk, the DSL / Head-teacher will speak with the police and the Education Safeguarding Service first, to ensure that potential criminal or child protection investigations are not compromised.

### 10.1 Concerns about learner online behaviour and/or welfare

- The DSL will be informed of all online safety concerns involving safeguarding or child protection risks in line with our child protection policy.
- All concerns about learners will be recorded in line with our child protection policy.
- St Mary & St Benedict CP School recognises that whilst risks can be posed by unknown individuals or adults online, learners can also abuse their peers; all online peer on peer abuse concerns will be responded to in line with our child protection and behaviour policies.
- The DSL (or deputy) will ensure that online safety concerns are escalated and reported to relevant partner agencies in line with local policies and procedures.
- Appropriate sanctions and/or pastoral/welfare support will be offered to learners as appropriate. Civil or legal action will be taken if necessary.
- We will inform parents/carers of online safety incidents or concerns involving their child, as and when required.

## 10.2 Concerns about staff online behaviour and/or welfare

- Any complaint about staff misuse will be referred to the Head-teacher, in accordance with our allegations against staff policy.
- Any allegations regarding a member of staff's online conduct will be discussed with the LADO (Local Authority Designated Officer).
- Appropriate disciplinary, civil and/or legal action will be taken in accordance with our staff behaviour policy/code of conduct.
- Welfare support will be offered to staff as appropriate.

## 10.3 Concerns about parent/carer online behaviour and/or welfare

- Concerns regarding parents/carers behaviour and/or welfare online will be reported to the Head teacher and/or DSL (or deputy). The Head teacher and/or DSL will respond to concerns in line with existing policies, including but not limited to child protection, anti-bullying, complaints, allegations against staff, home-school agreements, acceptable use of technology and behaviour policy.
- Civil or legal action will be taken if necessary.
- Welfare support will be offered to parents/carers as appropriate.

## II. Procedures for Responding to Specific Online Concerns

### II.1 Online sexual violence and sexual harassment between children

*Headteachers, managers and DSLs may find it helpful to access Childnet's online sexual harassment guidance: [www.childnet.com/resources/step-up-speak-up/guidance-and-training-for-schools-and-professionals](http://www.childnet.com/resources/step-up-speak-up/guidance-and-training-for-schools-and-professionals)*

- Full details of our response to peer on peer abuse, including sexual violence and harassment can be found in our child protection policy.
- St Mary & St Benedict CP School recognises that sexual violence and sexual harassment between children can take place online. Examples may include;
  - Non-consensual sharing of sexual images and videos
  - Sexualised online bullying
  - Online coercion and threats
  - 'Upskirting', which typically involves taking a picture under a person's clothing without them knowing, with the intention of obtaining sexual gratification, or causing the victim humiliation, distress or alarm. It is a criminal offence
  - Unwanted sexual comments and messages on social media

- Online sexual exploitation
- We will respond to concerns regarding online sexual violence and sexual harassment between children, regardless of whether the incident took place on our premises or using our equipment.
- If made aware of any concerns relating to online sexual violence and sexual harassment, we will:
  - immediately notify the DSL (or deputy) and act in accordance with our child protection and anti-bullying policies.
  - if content is contained on learners personal devices, they will be managed in accordance with the DfE '[searching screening and confiscation](#)' advice.
  - provide the necessary safeguards and support for all learners involved, such as implementing safety plans, offering advice on blocking, reporting and removing online content, and providing appropriate counselling/pastoral support.
  - implement appropriate sanctions in accordance with our behaviour policy.
  - inform parents and carers, if appropriate, about the incident and how it is being managed.
  - If appropriate, make referrals to partner agencies, such as Children's Social Work Service and/or the police.
  - if the concern involves children and young people at a different educational setting, the DSL will work in partnership with other DSLs to ensure appropriate safeguarding action is taken in the wider local community.
    - If a criminal offence has been committed, the DSL (or deputy) will discuss this with the police first to ensure that investigations are not compromised.
  - review the handling of any incidents to ensure that best practice was implemented, and policies/procedures are appropriate.
- St Mary & St Benedict CP School recognises that internet brings the potential for the impact of any sexual violence and sexual harassment concerns to extend further than the local community, and for a victim or alleged perpetrator to become marginalised and excluded by online communities.
- St Mary & St Benedict CP School recognises the potential for repeat victimisation in the future if abusive content continues to exist somewhere online.
- To help minimise concerns, St Mary & St Benedict CP School will ensure that all members of the community are made aware of the potential social, psychological and criminal consequences of online sexual violence and sexual harassment by implementing a range of age and ability appropriate educational methods as part of our PSHE and Computing curriculum.
- We will ensure that all members of the community are aware of sources of support regarding online sexual violence and sexual harassment between learners.

## 11.2 Youth produced sexual imagery ("sexting")

- St Mary & St Benedict CP School recognises youth produced sexual imagery (also known as "sexting") as a safeguarding issue; all concerns will be reported to and dealt with by the DSL (or deputy).

- We will follow the advice as set out in the non-statutory UKCIS guidance: '[Sexting in schools and colleges: responding to incidents and safeguarding young people.](#)' Reference to the school Safeguarding policy must be made too.
- Youth produced sexual imagery or 'sexting' is defined as the production and/or sharing of sexual photos and videos of and by young people who are under the age of 18. It includes nude or nearly nude images and/or sexual acts.
- It is an offence to possess, distribute, show and make indecent images of children. The Sexual Offences Act 2003 defines a child, for the purposes of indecent images, as anyone under the age of 18.
- St Mary & St Benedict CP School will ensure that all members of the community are made aware of the potential social, psychological and criminal consequences of creating or sharing youth produced sexual imagery by implementing preventative approaches, via a range of age and ability appropriate educational methods. This can be achieved through making links with the RSE, Computing and PSHE curriculums.
- We will ensure that all members of the community are aware of sources of support regarding the taking and sharing of youth produced sexual imagery. This will include parents and carers who receive monthly editions of an Online Safety Newsletter and redirection to CEOPs if necessary.
- We will respond to concerns regarding youth produced sexual imagery, regardless of whether the incident took place on site or using setting provided or personal equipment.
- We will not:
  - view any suspected youth produced sexual imagery, unless there is no other option, or there is a clear safeguarding need or reason to do so.
    - If it is deemed necessary, the imagery will only be viewed where possible by the DSL, and any decision making will be clearly documented.
  - send, share, save or make copies of content suspected to be an indecent image/video of a child (i.e. youth produced sexual imagery) and will not allow or request learners to do so.
- If made aware of an incident involving the creation or distribution of youth produced sexual imagery, we will:
  - act in accordance with our child protection policies and the relevant local procedures.
  - ensure the DSL (or deputy) responds in line with the [UKCIS](#) and KSCMP guidance.
  - Store any devices containing potential youth produced sexual imagery securely
    - If content is contained on learners personal devices, they will be managed in accordance with the DfE '[searching screening and confiscation](#)' advice.
    - If a potentially indecent image has been taken or shared on our network or devices, we will act to block access to all users and isolate the image.

- carry out a risk assessment in line with the [UKCIS](#) and KSCMP guidance which considers the age and vulnerability of learners involved, including the possibility of carrying out relevant checks with other agencies.
- inform parents/carers about the incident and how it is being managed and provide support and signposting, as appropriate.
- make a referral to Children's Social Work Service and/or the police, as deemed appropriate in line with the [UKCIS](#) and KSCMP guidance.
- provide the necessary safeguards and support for learners, such as offering counselling or pastoral support.
- implement appropriate sanctions in accordance with our behaviour policy but taking care not to further traumatise victims where possible.
- consider the deletion of images in accordance with the [UKCIS](#) guidance.
  - Images will only be deleted once the DSL has confirmed that other agencies do not need to be involved and are sure that to do so would not place a child at risk or compromise an investigation.
- review the handling of any incidents to ensure that best practice was implemented; the leadership team will also review and update any management procedures, where necessary.

### 11.3 Online abuse and exploitation (including child sexual abuse and sexual or criminal exploitation)

- St Mary & St Benedict CP School recognises online abuse and exploitation, including sexual abuse and sexual or criminal exploitation, as a safeguarding issue and all concerns will be reported to and dealt with by the DSL (or deputy), in line with our child protection policy.
- St Mary & St Benedict CP School will ensure that all members of the community are aware of online child abuse and sexual or criminal exploitation, including the possible grooming approaches which may be employed by offenders to target learners, and understand how to respond to concerns.
- We will implement preventative approaches for online child abuse and exploitation via a range of age and ability appropriate education for learners, staff and parents/carers. The RSE policy and wider curriculum subjects such as PSHE and Online safety in Computing enable the school to teach children in these areas.
- We will ensure that all members of the community are aware of the support available regarding online child abuse and exploitation, both locally and nationally.
- We will ensure that the 'Click CEOP' report button used to report online child sexual abuse is visible and available to learners and other members of our community via the school website :  
[www.stmary-stben.coventry.sch.uk](http://www.stmary-stben.coventry.sch.uk)
- If made aware of an incident involving online child abuse and/or exploitation, we will:

- act in accordance with our child protection policies and the relevant KSCMP procedures.
- store any devices containing evidence securely.
  - If content is contained on learners personal devices, they will be managed in accordance with the DfE '[searching screening and confiscation](#)' advice.
  - If any evidence is stored on our network or devices, we will act to block access to other users and isolate the content.
- if appropriate, make a referral to Children's Social Work Service and inform the police via 101, or 999 if a learner is at immediate risk.
- carry out a risk assessment which considers any vulnerabilities of learner(s) involved, including carrying out relevant checks with other agencies.
- inform parents/carers about the incident and how it is being managed and provide support and signposting, as appropriate.
- provide the necessary safeguards and support for learners, such as, offering counselling or pastoral support.
- review the handling of any incidents to ensure that best practice is implemented; leadership team will review and update any management procedures, where necessary.
- We will respond to concerns regarding online abuse and exploitation, regardless of whether the incident took place on our premises or using setting provided or personal equipment.
  - Where possible and appropriate, learners will be involved in decision making. If appropriate, they will be empowered to report concerns themselves with support, for example if the concern relates to online sexual abuse via CEOP: [www.ceop.police.uk/safety-centre/](http://www.ceop.police.uk/safety-centre/)
- If we are unclear whether a criminal offence has been committed, the DSL (or deputy) will obtain advice immediately through the Education Safeguarding Service and/or police.
- If made aware of intelligence or information which may relate to child sexual exploitation (on or offline), it will be passed through to the police by the DSL (or deputy).
- If members of the public or learners at other settings are believed to have been targeted, the DSL (or deputy) will seek advice from the police and/or the Education Safeguarding Service before sharing specific information to ensure that potential investigations are not compromised.

#### 11.4 Indecent Images of Children (IIOC)

- St Mary & St Benedict CP School will ensure that all members of the community are made aware of the possible consequences of accessing Indecent Images of Children (IIOC) as appropriate to the age and ability.
- We will respond to concerns regarding IIOC on our equipment and/or personal equipment, even if access took place off site.

- We will seek to prevent accidental access to IIOC by using an Internet Service Provider (ISP) which subscribes to the Internet Watch Foundation (IWF) block list and by implementing appropriate filtering, firewalls and anti-spam software.
- If we are unclear if a criminal offence has been committed, the DSL (or deputy) will obtain advice immediately through the police and/or the Education Safeguarding Service.
- If made aware of IIOC, we will:
  - act in accordance with our child protection policy and the relevant KSCMP procedures.
  - store any devices involved securely.
  - immediately inform appropriate organisations, such as the IWF and police.
- If made aware that a member of staff or a learner has been inadvertently exposed to indecent images of children, we will:
  - ensure that the DSL (or deputy) is informed.
  - ensure that the URLs (webpage addresses) which contain the suspect images are reported to the IWF via [www.iwf.org.uk](http://www.iwf.org.uk), CEOPS and school Filtering services via the school computing technician.
  - ensure that any copies that exist of the image, for example in emails, are deleted.
  - report concerns, as appropriate to parents and carers.
- If made aware that indecent images of children have been found on the setting provided devices, we will:
  - ensure that the DSL (or deputy) is informed.
  - ensure that the URLs (webpage addresses) which contain the suspect images are reported to the IWF via [www.iwf.org.uk](http://www.iwf.org.uk) .
  - inform the police via 101 or 999 if there is an immediate risk of harm, and Children's Social Work Service, as appropriate.
  - only store copies of images (securely, where no one else has access to them and delete all other copies) following a written request from the police.
  - report concerns, as appropriate to parents/carers.
- If made aware that a member of staff is in possession of indecent images of children on St Mary & St Benedict CP School provided devices, we will:
  - ensure that the Head teacher is informed in line with our managing allegations against staff policy.
  - inform the Local LADO and other relevant organisations in accordance with our managing allegations against staff policy.
  - quarantine any devices until police advice has been sought.

## 11.5 Cyberbullying

- Cyberbullying, along with all other forms of bullying, will not be tolerated at St Mary & St Benedict CP School .
- Full details of how we will respond to cyberbullying are set out in our anti-bullying policy and link closely to the expectations set out in the Code of Conduct.

## 11.6 Online hate

- Online hate content, directed towards or posted by, specific members of the community will not be tolerated at St Mary & St Benedict CP School and will be responded to in line with existing policies, including child protection, anti-bullying and behaviour.
- All members of the community will be advised to report online hate in accordance with relevant policies and procedures.
- The police will be contacted if a criminal offence is suspected.
- If we are unclear on how to respond, or whether a criminal offence has been committed, the DSL (or deputy) will obtain advice through the Education Safeguarding Service and/or the police.

## 11.7 Online radicalisation and extremism

- As listed in this policy, we will take all reasonable precautions to ensure that learners and staff are safe from terrorist and extremist material when accessing the internet on site.
- If we are concerned that a learner or adult may be at risk of radicalisation online, the DSL (or deputy) will be informed immediately, and action will be taken in line with our child protection policy.
- If we are concerned that member of staff may be at risk of radicalisation online, the Head teacher will be informed immediately, and action will be taken in line with the child protection and allegations policies, including referral to PREVENT.

# Responding to an Online Safety Concern Flowchart

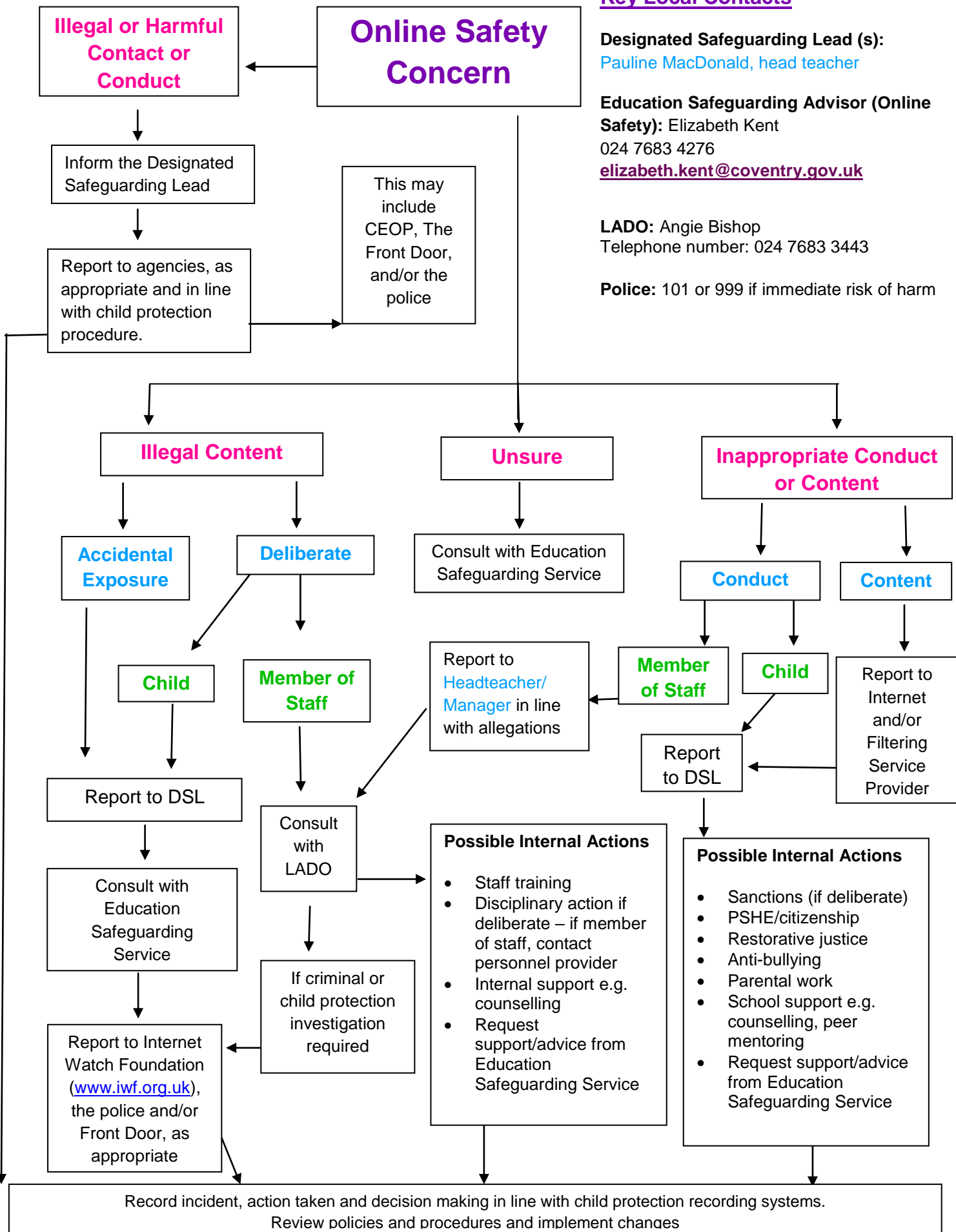
## Key Local Contacts

**Designated Safeguarding Lead (s):**  
 Pauline MacDonald, head teacher

**Education Safeguarding Advisor (Online Safety):** Elizabeth Kent  
 024 7683 4276  
[elizabeth.kent@coventry.gov.uk](mailto:elizabeth.kent@coventry.gov.uk)

**LADO:** Angie Bishop  
 Telephone number: 024 7683 3443

**Police:** 101 or 999 if immediate risk of harm



## Useful Links

### Educational Setting Support and Guidance

#### Coventry Local Authority Designated Officer

The new designated officer is now in post and policies can be updated with her details. Angie Bishop – Risk Management Co-ordinator is now the designated officer for Coventry.

Email address: [LADO@coventry.gov.uk](mailto:LADO@coventry.gov.uk)

Telephone number: 024 7683 3443

#### Safeguarding in Education Adviser

Elizabeth Kent

024 7683 4276

[elizabeth.kent@coventry.gov.uk](mailto:elizabeth.kent@coventry.gov.uk)

#### Education Representative - MASH

Charlotte Hegarty

024 7678 8555

[charlotte.hegarty@coventry.gov.uk](mailto:charlotte.hegarty@coventry.gov.uk)

#### Additional Guidance for Educational Settings:

- [www.kelsi.org.uk/support-for-children-and-young-people/child-protection-and-safeguarding](http://www.kelsi.org.uk/support-for-children-and-young-people/child-protection-and-safeguarding)
- [www.theeducationpeople.org/blog/?tags=Online+Safety&page=1](http://www.theeducationpeople.org/blog/?tags=Online+Safety&page=1)

#### West Midlands Police:

- <https://west-midlands.police.uk/your-local-police/coventry>
- In an emergency (a life is in danger or a crime in progress) dial 999. For non-urgent enquiries, contact West Midlands Police via 101

## National Links and Resources for Settings, Learners and Parents/carers

- CEOP:
  - [www.thinkuknow.co.uk](http://www.thinkuknow.co.uk)
  - [www.ceop.police.uk](http://www.ceop.police.uk)
- Internet Watch Foundation (IWF): [www.iwf.org.uk](http://www.iwf.org.uk)

- UK Council for Internet Safety (UKCIS): [www.gov.uk/government/organisations/uk-council-for-internet-safety](http://www.gov.uk/government/organisations/uk-council-for-internet-safety)
- UK Safer Internet Centre: [www.saferinternet.org.uk](http://www.saferinternet.org.uk)
  - Professional Online Safety Helpline: [www.saferinternet.org.uk/about/helpline](http://www.saferinternet.org.uk/about/helpline)
  - Report Harmful Content: <https://reportharmfulcontent.com/>
- 360 Safe Self-Review tool for schools: [www.360safe.org.uk](http://www.360safe.org.uk)
- Childnet: [www.childnet.com](http://www.childnet.com)
  - Step Up Speak Up – Online Sexual Harassment Guidance: [www.childnet.com/resources/step-up-speak-up/guidance-and-training-for-schools-and-professionals](http://www.childnet.com/resources/step-up-speak-up/guidance-and-training-for-schools-and-professionals)
  - Cyberbullying Guidance: [www.childnet.com/resources/cyberbullying-guidance-for-schools](http://www.childnet.com/resources/cyberbullying-guidance-for-schools)
- Internet Matters: [www.internetmatters.org](http://www.internetmatters.org)
- Parent Zone: <https://parentzone.org.uk>
- Parent Info: <https://parentinfo.org>
- NSPCC: [www.nspcc.org.uk/onlinesafety](http://www.nspcc.org.uk/onlinesafety)
  - ChildLine: [www.childline.org.uk](http://www.childline.org.uk)
  - Net Aware: [www.net-aware.org.uk](http://www.net-aware.org.uk)
- Lucy Faithfull Foundation: [www.lucyfaithfull.org](http://www.lucyfaithfull.org)
- The Marie Collins Foundation: [www.mariecollinsfoundation.org.uk](http://www.mariecollinsfoundation.org.uk)
- Action Fraud: [www.actionfraud.police.uk](http://www.actionfraud.police.uk)
- Get Safe Online: [www.getsafeonline.org](http://www.getsafeonline.org)

# Acceptable Use of Technology Policy (AUP)

## Learner Acceptable Use of Technology Policies

### Acceptable Use Policy Early Years



### Acceptable Use Policy Key Stage 1

When Using the Computer



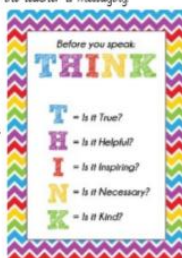
- I always ask a teacher before using a computer, tablet or camera.
- I only open activities that an adult has told or allowed me to use.
- I will tell an adult if I see something on a screen that upsets me.
- I keep my passwords safe and will never use someone else's.
- I know personal information such as my address and birthday should never be shared online.
- I know I must never communicate with strangers online.

I understand this agreement and know the consequences if I don't follow it.

### Acceptable Use Policy Key Stage 2

- I will only access computing equipment when a trusted adult has given me permission and is present.
- I will not deliberately look for, save or send anything that could make others upset.
- I will immediately inform an adult if I see something that worries me, or I know is inappropriate.
- I will keep my username and password secure; this includes not sharing it with others.
- I understand what personal information is and will never share my own or others' personal information such as phone numbers, home addresses and names.
- I will always use my own username and password to access the school network.
- In order to help keep me and others safe, I know that the school checks my files and the online sites I visit. They will contact my parents/carers if an adult at school is concerned about me.
- I will respect computing equipment and will immediately notify an adult if I notice something isn't working correctly or is damaged.
- I will use all communication tools such as email and blogs carefully. I will notify an adult immediately if I notice that someone who isn't approved by the teacher is messaging.
- Before I share, post or reply to anything online, I will THINK.

I understand that if I behave negatively whilst using Technology towards other members of the school, my parents/carers will be informed and appropriate actions taken.



## Acceptable Use of Technology - Forms for Parents/Carers

### Parent/Carer Acknowledgement Form

#### **Learner Acceptable Use of Technology Policy: St Mary & St Benedict Catholic Primary School Parental Acknowledgment**

1. I, with my child, have read and discussed **St Mary & St Benedict CP School** learner acceptable use of technology policy (AUP). I understand that the AUP applies to the use of the internet and other related devices and services, inside and outside of the setting.
2. I am aware that any internet and IT use using school equipment may be monitored for safety and security reason to safeguard both my child and the school systems. This monitoring will be proportionate and will take place in accordance with data protection, privacy and human rights legislation.
3. I understand that the school will take every reasonable precaution, including monitoring and filtering systems, to ensure my child will be safe when they use the internet and other associated technologies. I understand that the school cannot ultimately be held responsible for the nature and content of materials accessed on the internet and using mobile technologies.
4. I with my child, am aware of the importance of safe online behaviour and will not deliberately upload or add any images, video, sounds or text that could upset, threaten the safety of or offend any member of the school community.
5. I understand that the school will contact me if they have concerns about any possible breaches of the AUP or have any concerns about my child's safety.
6. I will inform the school or other relevant organisations if I have concerns over my child's or other members of the school communities' safety online.
7. I know that my child will receive online safety education to help them understand the importance of safe use of technology and the internet – both in and out of school.
8. I will support the school online safety approaches and will encourage my child to adopt safe use of the internet and other technology at home.

Child's Name.....

Class..... Date.....

Parents Name.....

Parents Signature..... Date.....

# Acceptable Use of Technology for Staff, Visitors and Volunteers

## Staff Acceptable Use of Technology Policy

As a professional organisation with responsibility for safeguarding, all members of staff are expected to use St Mary & St Benedict CP School IT systems in a professional, lawful, and ethical manner. To ensure that members of staff understand their professional responsibilities when using technology and provide appropriate curriculum opportunities for learners, they are asked to read and sign the staff Acceptable Use of Technology Policy (AUP).

Our AUP is not intended to unduly limit the ways in which members of staff teach or use technology professionally, or indeed how they use the internet personally, however the AUP will help ensure that all staff understand St Mary & St Benedict CP School expectations regarding safe and responsible technology use, and can manage the potential risks posed. The AUP will also help to ensure that St Mary & St Benedict 's systems are protected from any accidental or deliberate misuse which could put the safety and security of our systems or members of the community at risk.

### Policy Scope

1. I understand that this AUP applies to my use of technology systems and services provided to me or accessed as part of my role within St Mary & St Benedict CP School both professionally and personally. This may include use of laptops, mobile phones, tablets, digital cameras and email as well as IT networks, data and data storage and online and offline communication technologies.
2. I understand that St Mary & St Benedict CP School Acceptable Use of Technology Policy (AUP) should be read and followed in line with the St Mary & St Benedict 's staff behaviour policy/code of conduct.
3. I am aware that this AUP does not provide an exhaustive list; all staff should ensure that technology use is consistent with the St Mary & St Benedict 's ethos, St Mary & St Benedict 's staff behaviour and safeguarding policies, national and local education and child protection guidance, and the law.

### Use of St Mary & St Benedict 's Devices and Systems

4. I will only use the equipment and internet services provided to me by the St Mary & St Benedict 's for example St Mary & St Benedict 's provided laptops, tablets, mobile phones and internet access, when working with learners.
5. I understand that any equipment and internet services provided by my workplace is intended for educational use and should only be accessed by members of staff. Reasonable personal use of setting IT systems and/or devices by staff is allowed.

### Data and System Security

6. To prevent unauthorised access to systems or personal data, I will not leave any information system unattended without first logging out or securing/locking access.
  - o I will use a 'strong' password to access St Mary & St Benedict 's systems.

- I will protect the devices in my care from unapproved access or theft, eg: not leaving devices visible or unsupervised in public places.
7. I will respect St Mary & St Benedict 's system security and will not disclose my password or security information to others.
  8. I will not open any hyperlinks or attachments in emails unless they are from a known and trusted source. If I have any concerns about email content sent to me, I will report them to the IT technician.
  9. I will not attempt to install any personally purchased or downloaded software, including browser toolbars, or hardware without permission from the IT technician.
  10. I will ensure that any personal data is kept in accordance with the Data Protection legislation, including GDPR in line with the St Mary & St Benedict 's information security policies.
    - All personal data will be obtained and processed fairly and lawfully, only kept for specific purposes, held no longer than necessary and will be kept private and secure with appropriate security measures in place, whether used in the workplace, hosted online or accessed remotely.
    - Any data being removed from the St Mary & St Benedict 's site, such as via email or on memory sticks or CDs, will be suitably protected. This may include data being encrypted by a method approved by the school – encrypted memory drives and emails used as standard.
  11. I will not keep documents which contain St Mary & St Benedict 's related sensitive or personal information, including images, files, videos and emails, on any personal devices, such as laptops, digital cameras, and mobile phones. Where possible, I will use the St Mary & St Benedict 's network to upload any work documents and files in a password protected environment.
  12. I will not store any personal information on the St Mary & St Benedict's IT system, including laptops or similar devices issued to members of staff, that is unrelated to St Mary & St Benedict 's activities, such as personal photographs, files or financial information.
  13. I will ensure that St Mary & St Benedict 's owned information systems are used lawfully and appropriately. I understand that the Computer Misuse Act 1990 makes the following criminal offences: to gain unauthorised access to computer material; to gain unauthorised access to computer material with intent to commit or facilitate commission of further offences or to modify computer material without authorisation.
  14. I will not attempt to bypass any filtering and/or security systems put in place by the school.
  15. If I suspect a computer or system has been damaged or affected by a virus or other malware, I will report this to the IT technician as soon as possible.
  16. If I have lost any St Mary & St Benedict 's related documents or files, I will report this to the technician and St Mary & St Benedict 's Data Protection Officer (Pauline MacDonald) as soon as possible.

17. Any images or videos of learners will only be used as stated in the St Mary & St Benedict 's camera and image use policy (link).
- o I understand images of learners must always be appropriate and should only be taken with St Mary & St Benedict 's provided equipment and taken/published where learners and their parent/carer have given explicit consent.

### Classroom Practice

18. I am aware of safe technology use in the classroom and other working spaces, including appropriate supervision of learners, as outlined in the St Mary & St Benedict 's online safety policy.
19. I have read and understood the St Mary & St Benedict 's online safety policy which covers expectations for learners regarding mobile technology and social media.
20. I will promote online safety with the learners in my care and will help them to develop a responsible attitude to safety online, system use and to the content they access or create by:
- o exploring online safety principles as part of an embedded and progressive curriculum and reinforcing safe behaviour whenever technology is used on site.
  - o creating a safe environment where learners feel comfortable to say what they feel, without fear of getting into trouble and/or be judged for talking about something which happened to them online.
  - o involving the Designated Safeguarding Lead (DSL) (Pauline MacDonald) as part of planning online safety lessons or activities to ensure support is in place for any learners who may be impacted by the content, if appropriate
  - o make informed decisions to ensure any online safety resources used with learners is appropriate.
21. I will report any filtering breaches (such as access to illegal, inappropriate or harmful material) to the DSL/IT technician in line with the St Mary & St Benedict 's online safety/child protection policy.
22. I will respect copyright and intellectual property rights; I will obtain appropriate permission to use content, and if videos, images, text or music are protected, I will not copy, share or distribute or use them.

### Use of Social Media and Mobile Technology

23. I have read and understood the St Mary & St Benedict 's online safety policy which covers expectations regarding staff use of mobile technology and social media.
24. I will ensure that my online reputation and use of IT and information systems are compatible with my professional role and in line with the staff behaviour policy/code of conduct, when using St Mary & St Benedict 's and personal systems. This includes my use of email, text, social media and any other personal devices or mobile technology.
- o I will take appropriate steps to protect myself online when using social media as outlined in the online safety/social media policy.
  - o I am aware of the St Mary & St Benedict 's expectations with regards to use of personal devices and mobile technology, including mobile phones as outlined in the online safety/mobile technology policy.

- I will not discuss or share data or information relating to learners, staff, St Mary & St Benedict 's business or parents/carers on social media.
  - I will ensure that my use of technology and the internet does not undermine my professional role or interfere with my work duties and is in accordance with the St Mary & St Benedict 's behaviour policy/code of conduct and the law.
25. My electronic communications with current and past learners and parents/carers will be transparent and open to scrutiny and will only take place within clear and explicit professional boundaries.
- I will ensure that all electronic communications take place in a professional manner via St Mary & St Benedict 's approved and/or provided communication channels, such as a St Mary & St Benedict 's email address or telephone number.
  - I will not share any personal contact information or details with learners, such as my personal email address or phone number.
  - I will not add or accept friend requests or communications on personal social media with current or past learners and/or parents/carers.
  - If I am approached online by a learner or parents/carer, I will not respond and will report the communication to my line manager and Pauline MacDonald - Designated Safeguarding Lead (DSL).
  - Any pre-existing relationships or situations that compromise my ability to comply with the AUP will be discussed with the DSL and/or head teacher.
26. If I have any queries or questions regarding safe and professional practise online either in St Mary & St Benedict 's or off site, I will raise them with the DSL and/or the head teacher.
27. I will not upload, download or access any materials which are illegal, such as child sexual abuse images, criminally racist material, adult pornography covered by the Obscene Publications Act.
28. I will not attempt to access, create, transmit, display, publish or forward any material or content online that is inappropriate or likely to harass, cause offence, inconvenience or needless anxiety to any other person.
29. I will not engage in any online activities or behaviour that could compromise my professional responsibilities or bring the reputation of the St Mary & St Benedict 's into disrepute.

### Policy Compliance

30. I understand that St Mary & St Benedict's may exercise its right to monitor the use of information systems, including internet access and the interception of emails, to monitor policy compliance and to ensure the safety of learners and staff. This monitoring will be proportionate and will take place in accordance with data protection, privacy and human rights legislation.

### Policy Breaches or Concerns

31. I will report and record concerns about the welfare, safety or behaviour of learners or parents/carers to the DSL in line with the St Mary & St Benedict 's online safety/child protection policy.

- 32. I will report concerns about the welfare, safety or behaviour of staff to the head teacher, in line with the allegations against staff policy.
- 33. I understand that if the school believe that unauthorised and/or inappropriate use of St Mary & St Benedict 's systems or devices is taking place, the school may invoke its disciplinary procedures as outlined in the staff behaviour policy/code of conduct.
- 34. I understand that if St Mary & St Benedict 's believe that unprofessional or inappropriate online activity, including behaviour which could bring the St Mary & St Benedict 's into disrepute, is taking place online, then St Mary & St Benedict 's may invoke its disciplinary procedures as outlined in the staff behaviour policy/code of conduct.
- 35. I understand that if St Mary & St Benedict 's suspects criminal offences have occurred, the police will be informed.

**I have read, understood and agreed to comply with St Mary & St Benedict Catholic Primary School's Staff Acceptable Use of Technology Policy when using the internet and other associated technologies, both on and off site.**

Name of staff member: .....

Signed: .....

Date (DDMMYY).....

## Acknowledgements and Thanks

This document and statements have been produced by The Education People Education Safeguarding Service with thanks to members of Kent Education Online Safety Strategy Group.

Additional thanks to the UK Safer Internet Centre, South West Grid for Learning, Childnet , CEOP, The Judd School, Kingsnorth Primary School, Loose Primary School, Peter Banbury, Kent Police, Kent Schools Personnel Service (SPS), Kent Legal Services and Kent Libraries and Archives, for providing comments, feedback and support on previous versions.